

Introducing the advanced technology

SANITIZING BOOTH



A wish for wellness...

Take Steps to Protect Yourself



Instant Sanitization Full Body



Fully Automatic



Sensor Base Auto Release Spray



Larger Tank Capacity



Touch Free



Auto Release Spray



Safety Assured



Low Cost Maintenance

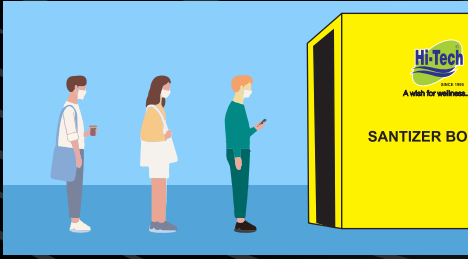
Hi-Tech certified



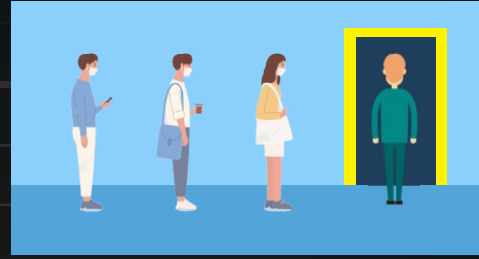
How to use Hi-Tech SANTIZER BOOTH

- Nowadays due to the COVID-19 Pandemic we all know require sanitize body.
- The Alcohol Sanitizers works immediately and effectively in order to kill bacteria and most viruses.

STEP 1 Join the Queue, one by one to Entry Point of Booth



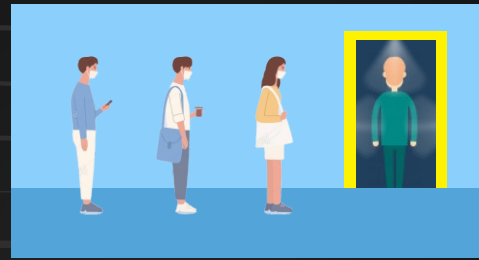
STEP 2 Enter in the Booth (one person at a time)



STEP 4 Exit from other End Move ahead.



STEP 3 Wait for 10 sec. to sanitize full body .



Application Where you can used it

Bank, Offices, School, Gym, Clinic, Airport, Hospitals, Industries, Bus or Railways, Shopping Malls, Restaurant, Hotels, Groceries Store, etc.

HI-TECH SANITIZATION BOOTH

contactless technology works on infrared photoelectric sensor



- Non Metallic Cabin
- Easy to Operate
- Customize as per requirement

TECHNICAL SPECIFICATION

Model	: Sanitizer Booth
Nozzle	: 4 Nos
Technology	: Photoelectric Sensor
Application	: Full Body Sanitizer
Installation	: Stand
Operation	: Auto Mist Spray
Spray Flow	: 15-20 ml Spray
Tank Type	: PVC Drum
Tank Capacity	: 80 Lit. (which can be refill)
Power	: 230 V AC, 3 AMP
Start - Stop	: In-Out Point
Dimension	: 3' x 7' x 7' ft

Warranty :	6 Month Parts Replacement
Tank Capacity :	80 Lit. (which can be refill)
Liquid Refilling :	Easy to Refill
Liquid :	any Alcoholic Sanitizer can be used (not hard form)
Dispense Cycle :	15 - 20 ml spray approx.
Installation :	- Fix it on Entry point of your place, Easy to install - Fill the liquid sanitizer on Tank (upto 80 Ltr) - Plug in to Standard Wall Socket
Note:	- Sanitizer or any liquid is not provided with the System

* Technical Specifications are subject to change without prior notice.

*T & C Apply